

EZSCREEN ThruTouch Touch Film

User's Guide

2009

© Copyright 2009.
Ezscreen Touch Screen Systems, All rights reserved.

Contents

1	INTRODUCTION	1
2	INSTALLATION	2
2.1	SYSTEM REQUIREMENTS	2
2.2	INSTALLATION	2
2.3	AUTO START	4
3	STARTING THE DRIVER	5
4	USER INTERFACE	5
5	CONFIGURING THE COMMUNICATIONS PORT	5
6	ADJUSTING THE TOUCH SENSITIVITY LEVEL	7
7	CALIBRATION	8
8	SETTING MOUSE OUTPUT	9
9	OTHERS	9
9.1	HIDE AND SHOW DRIVER WINDOW	9
9.2	CLOSING PROGRAM	10
9.3	SWITCHING BETWEEN BASIC AND ADVANCED MODE	10
9.4	RESET	11
9.5	VERSION INFORMATION	12
9.6	RECORDING LOGS	12
10	FAULT DIAGNOSING GUIDE	14

1 Introduction

This **TouchConsole** software has been written to interface with the **ThruTouch** running on Windows XP, Vista and Win7 operating systems.

The Touch Film is connected to a PC or laptop through RS232 port, or through USB port by a USB-RS232 converter.

2 Installation

2.1 System Requirements

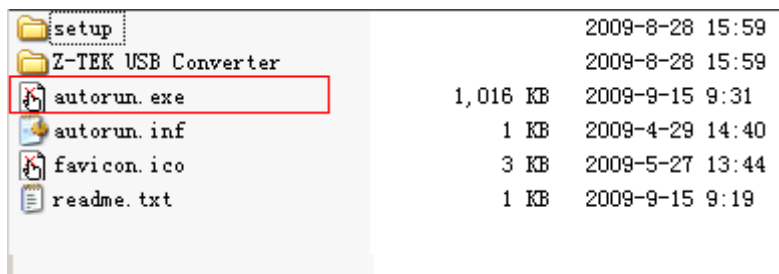
- Hardware: PC or Laptop, Pentium 4 CPU or above, 512M Memory or above, 200M Disk Space or above, RS232 port or USB 1.0/2.0 port.
- Operating System: Windows XP, Vista or Win7.
- Software Dependent: None.

TouchConsole itself does not need many system resources, but if the **interactive content** is much more complex, e.g. including 3D or complicated flash scene, a more powerful computer is required.

2.2 Installation

1. Install driver

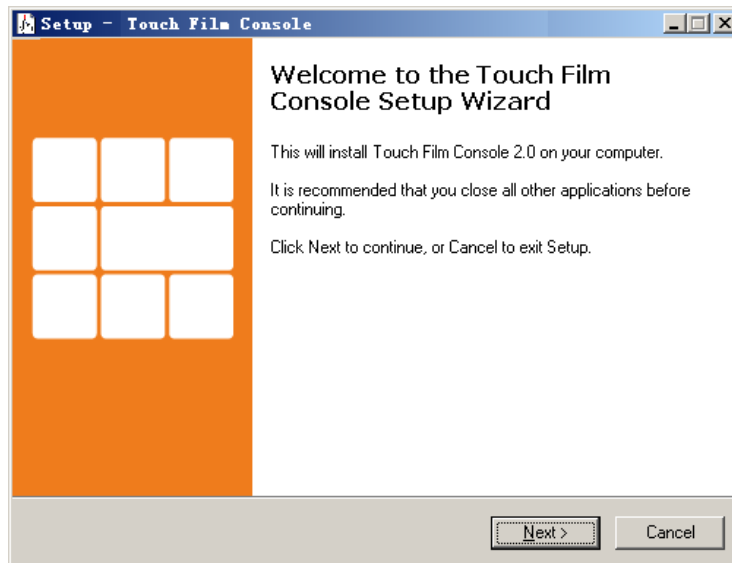
- (1) Double click icon **autorun.exe** to run setup program.



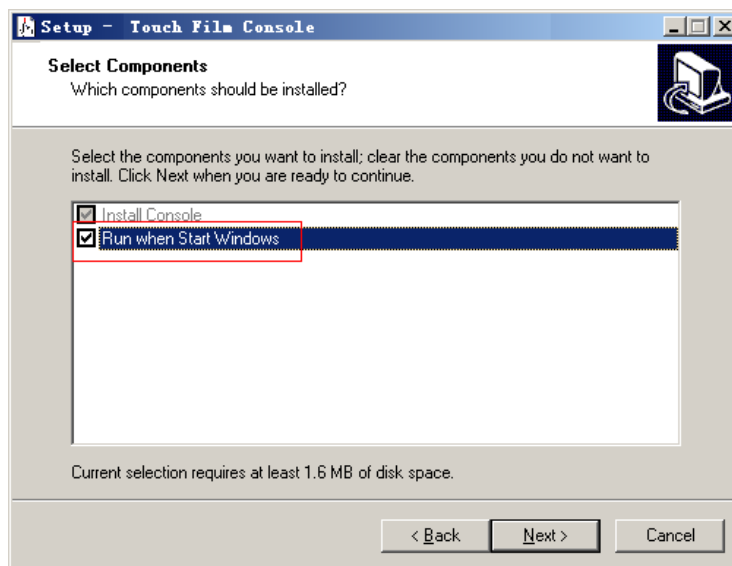
- (2) Click button "Install Driver".



(3) Follow the wizard to finish the installation.



(4) If you want to automatically start the driver every time Windows is started then select the check box "Run when Start Windows".



2. Switch on projector/LCD and align image with the active area of the touch film.

3. Connect the touch film to the RS232 port of the computer using the black data cable provided with the film. If there is no RS232 port on computer (some laptops), please connect it to the USB port through a RS232-USB converter. (It is required to install the driver of the RS232-USB converter at first. Please refer to the user's guide provided by the manufacturer of the converter.)

4. Select icon "Touch Film Console" from "Start -> All Programs -> Touch Film", to start the driver manually.

2.3 Auto Start

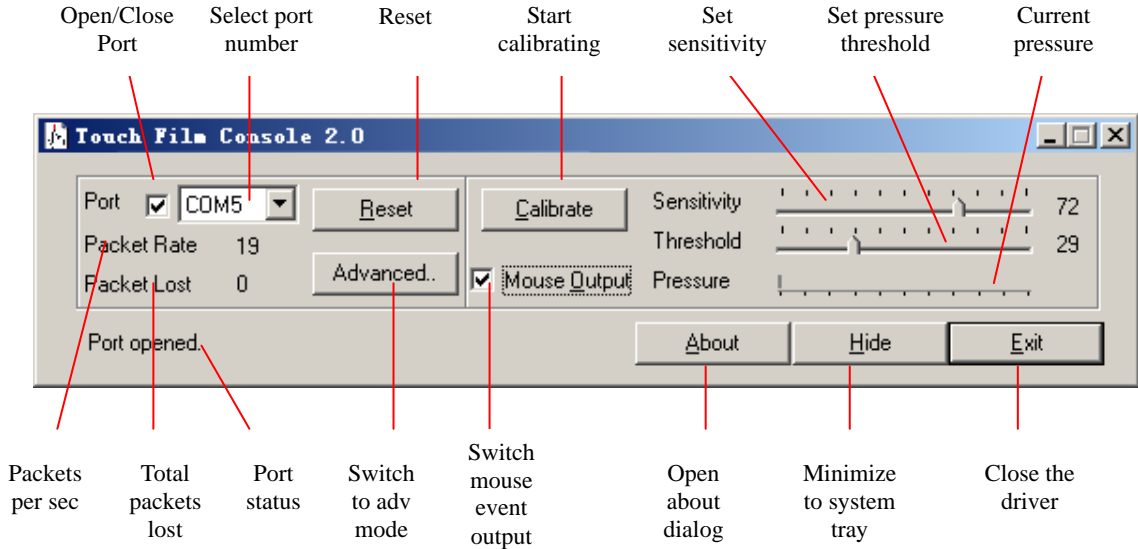
If it is required to start the driver every time Windows is started, please select the check box “Run when Start Windows” when going through the installation wizard. This procedure creates a short-cut to TouchCosole.exe and put it in the Start-Up folder of the Windows.

3 Starting the driver

Select icon "Touch Film Console" from "Start -> All Programs -> Touch Film".

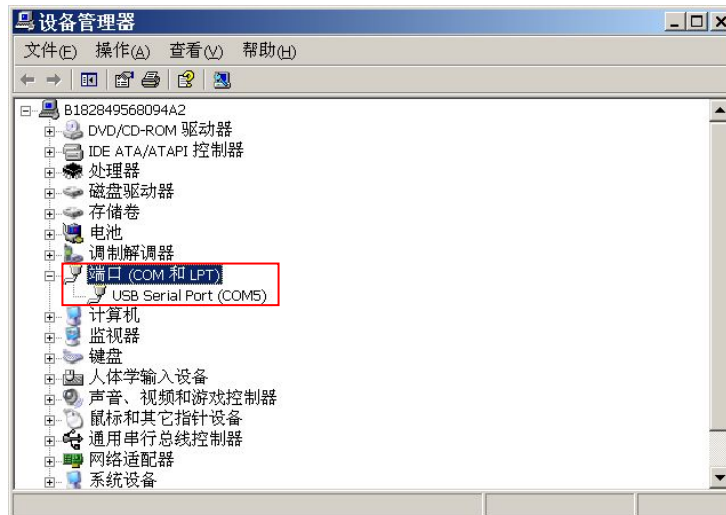
4 User Interface

When the driver starts it displays the following main window:

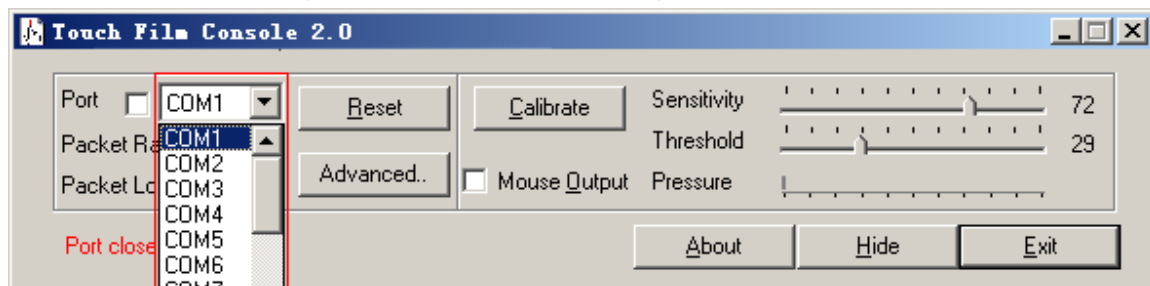


5 CONFIGURING THE COMMUNICATIONS PORT

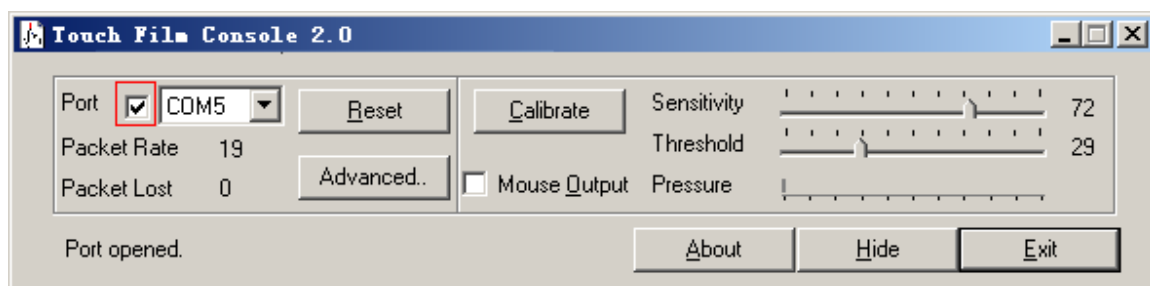
1. Connect the touch film to the RS232 port of the computer using the black data cable provided with the film. If there is no RS232 port on computer (some laptops), please connect to the USB port through a RS232-USB converter.
2. If you are not sure the number of COM port to which touch film connected, please check it step by step: open Device Manager, find the COM number from Port (COM and LPT). Typically, the COM port on the motherboard of the PC is COM1. Otherwise, the number will be not COM1. For example, the COM5 is used in the picture below.



3. Select correct COM port in the driver. For example, select COM5 in this case.



4. Select the check box "Port" left to the COM number. "Port opened" will be displayed, and the "Packet Rate" should be more than 18.



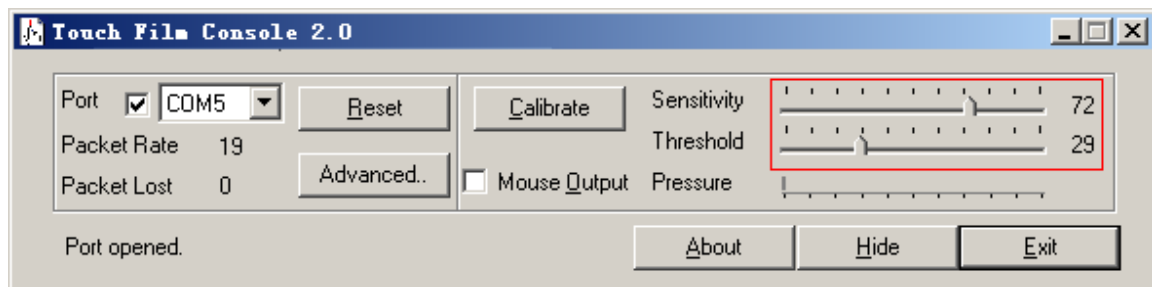
Reasons why the driver does not see the touch film are possibly:

- Did not choose the right COM port number
- Another device, driver or program is using the port

Note:

The mouse pointer will not respond to a touch until "Mouse Output" has been selected in the driver. Details of enabling mouse event output are in later chapter of this manual. Please do not enable "Mouse Output" right now.

6 ADJUSTING THE TOUCH SENSITIVITY LEVEL



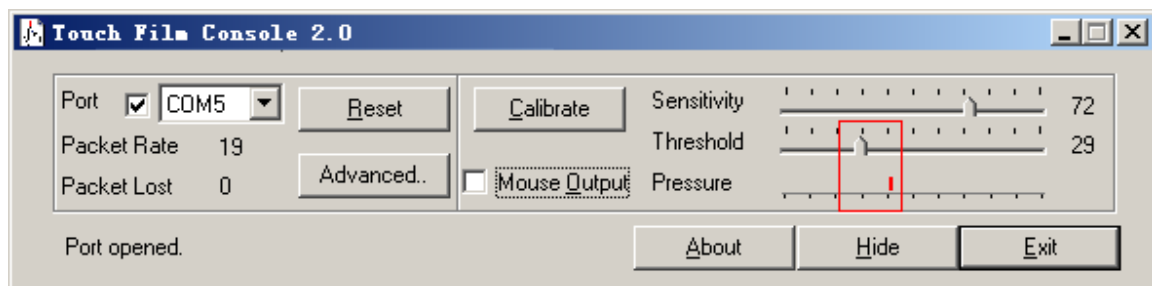
1. Please set “Sensitivity” to about two thirds of slider (65 ~ 85), “Threshold” to about one third (25 ~ 45). Make sure that the indicator of “Pressure” will not exceed “Threshold”.

2. Please place your finger over the surface anywhere of the touch film. Make sure that when your finger touch over the surface, the indicator of “Pressure” will exceed “Threshold”. If not, please adjust “Threshold” a little small to make this happen.

3. If you can’t get the right result from Step2, please adjust both “Sensitivity” and “Threshold” until you get result as below:

When your finger is not on the surface, the “Pressure” indicator will not exceed “Threshold”.

When your finger is on the surface, the “Pressure” indicator will exceed “Threshold”.



Note:

Sensitivity: The Sensitivity slider is used to set the sensitivity of the touch film. If the slider is set to the right, the touch film is more sensitive to detecting a touch. Sensitivity depends upon glass thickness or if the system is to be used with gloved hands.

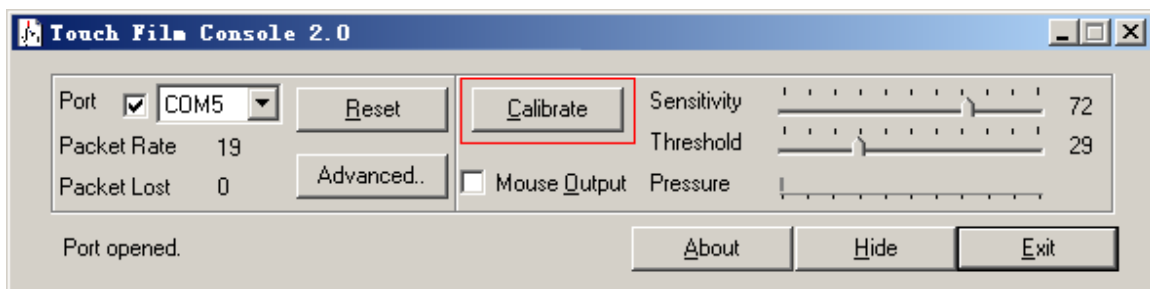
Threshold: The Threshold slider is used to adjust the sensitivity of the touch to simulate a mouse button press. The driver recognizes a touch when the Pressure indicator exceeds the position of the Threshold slider.

Pressure: The moving indicator under Pressure shows the strength of touch film signal. Nominally the Sensitivity slider is adjusted so the Pressure indicator moves about one third of the way along in response to a light touch.

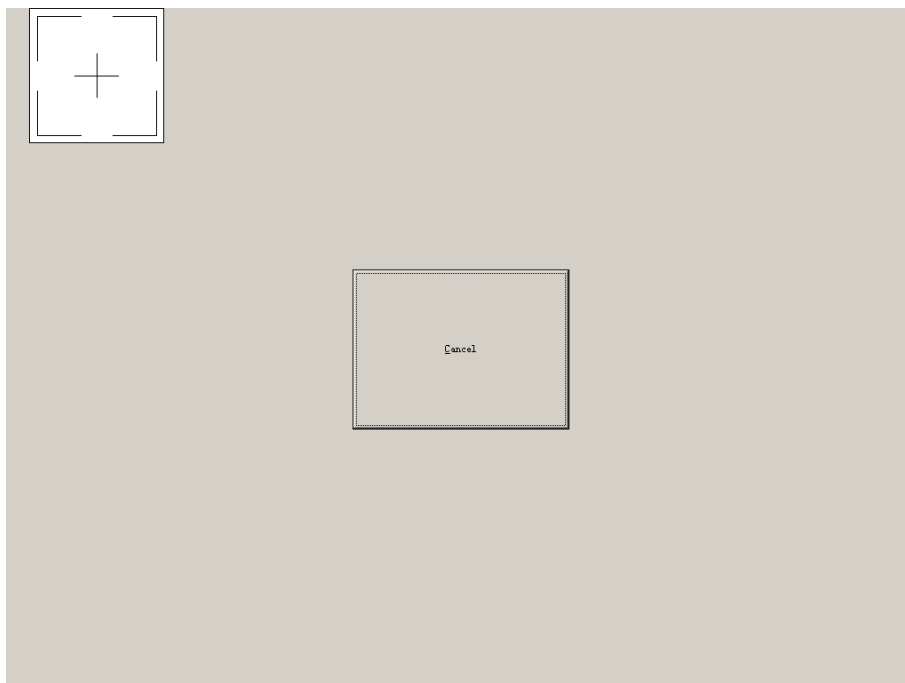
To make certain that the touch is sensitive enough all over the display area, move a finger around the touch film and make certain that the Pressure indicator always exceeds the Threshold slider position.

7 CALIBRATION

1. Click button "Calibrate".



2. You will see the following on the screen; there are 4 targets to touch in total, like the one shown below:



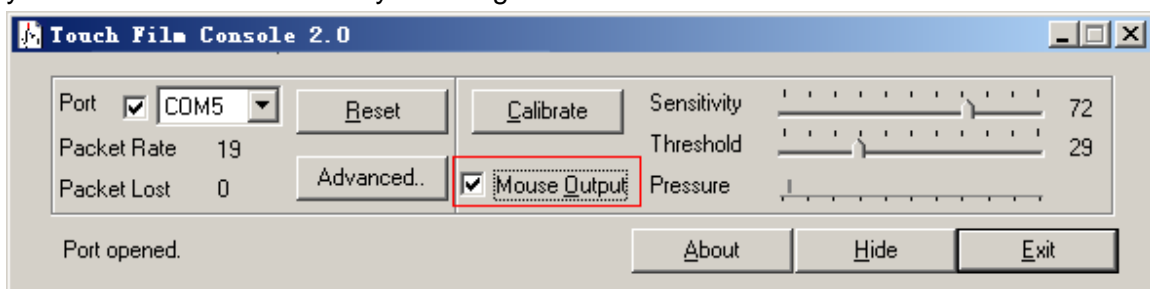
3. When each of these targets is displayed, touch and hold your finger on the centre of the target. You must touch all 4 targets.

4. The white rectangle in the target slowly moves towards the centre of the target.
5. Remove your finger only when the next target appears and touch that one.

If the touch calibration is not correct after this procedure, please run the process again and try to put your finger on the target as vertically as possible.

8 SETTING MOUSE OUTPUT

1. Select check box “Mouse Output”. Or you can enable it by hot key [Ctrl + Alt + M]. Now you can control the mouse by touching the surface.

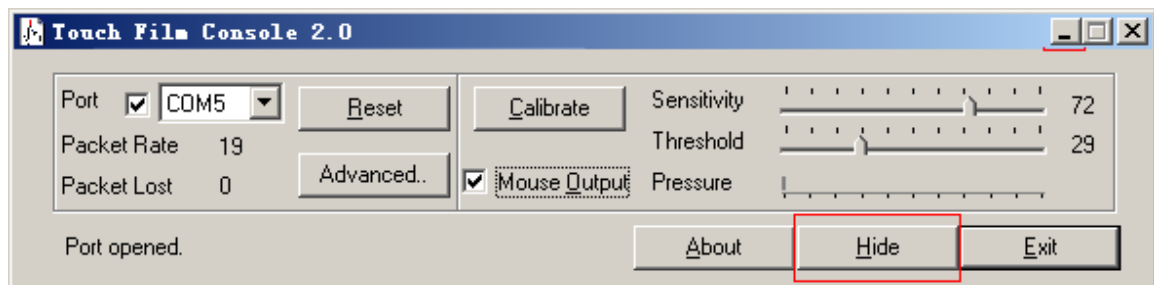


Congratulations! You have finished all the configurations.

9 Others

9.1 Hide and Show Driver Window

1. If you click the button “Hide” or “Minimize”, the driver will be minimized to the system tray.



The driver icon minimized in the system tray:



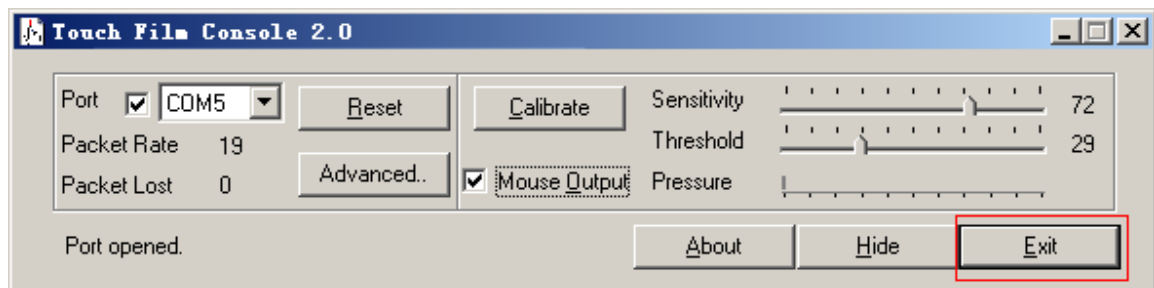
2. Click the icon or right click the icon then select “Show”, the driver window will restore again.



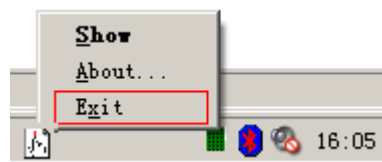
3. Also, you can hide or show driver window by hot keys [Ctrl + Alt + S].

9.2 Closing Program

1. Click button “Exit”.

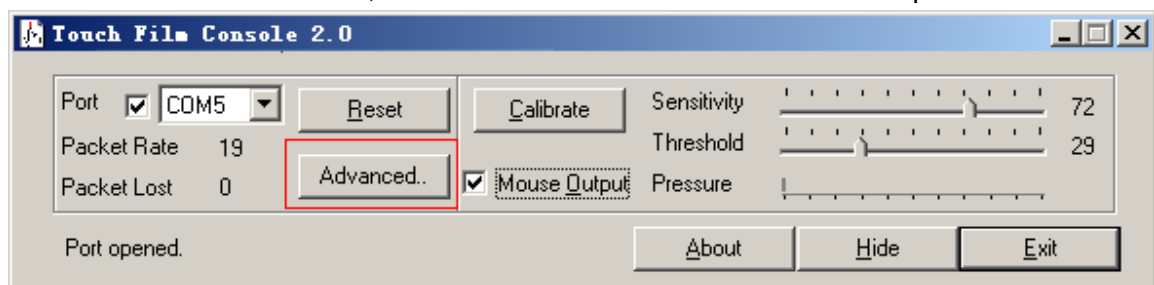


Or, right click the icon in the system tray then select “Exit”.



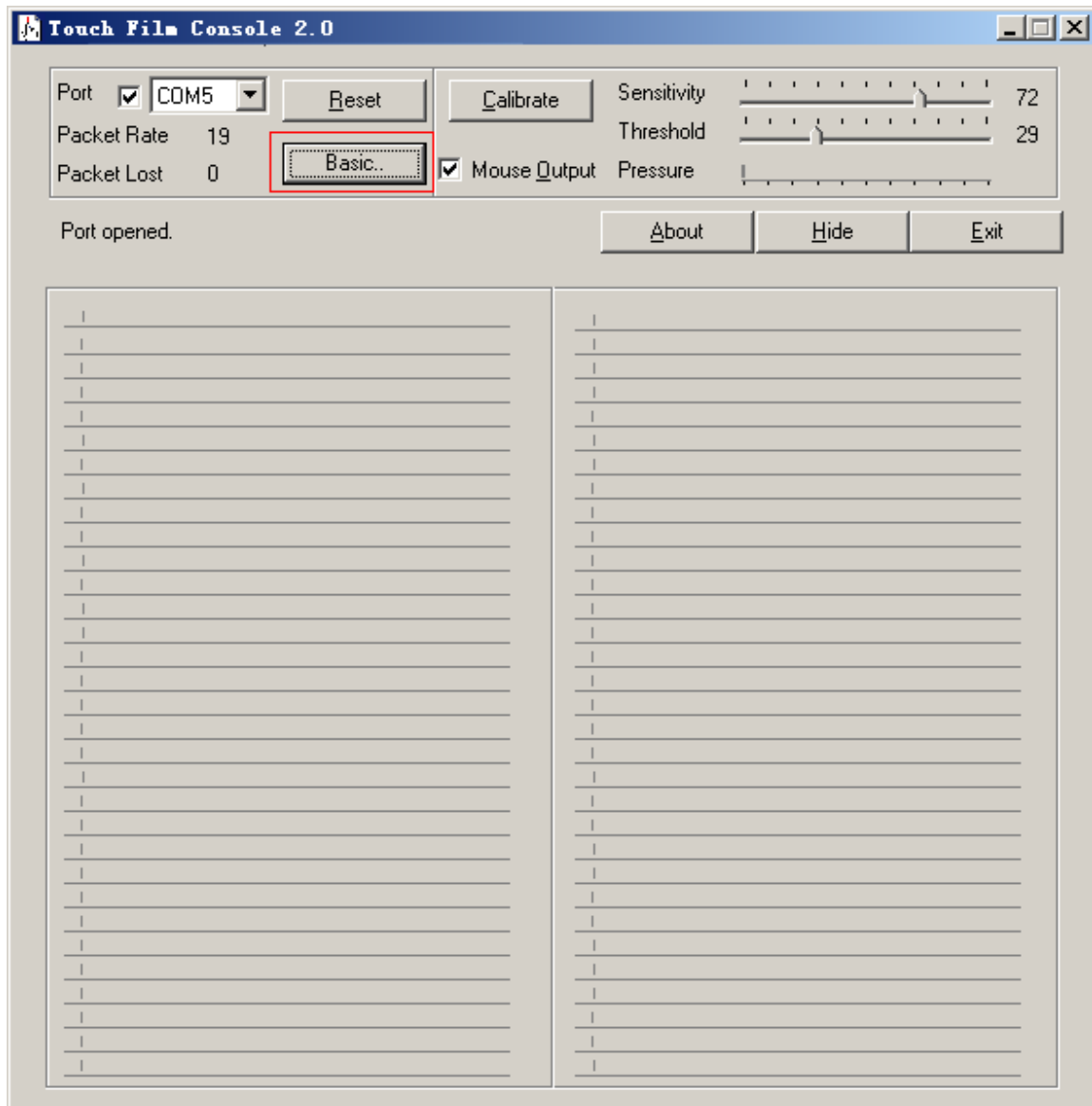
9.3 Switching between basic and advanced mode

1. Click button “Advanced”, the advanced mode interface will show up.



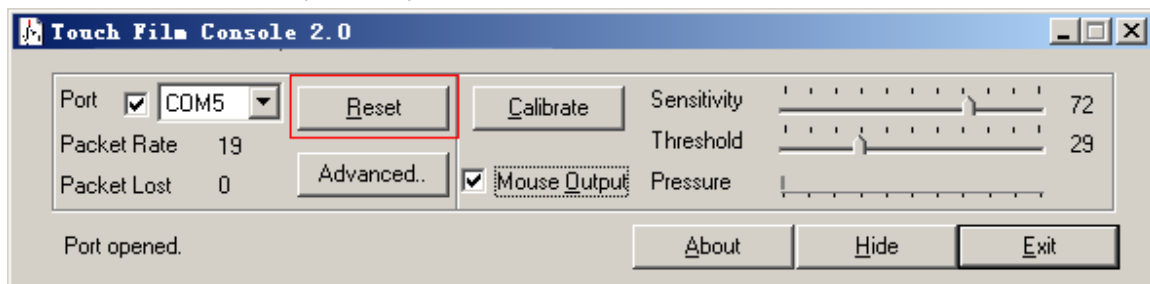
You can see the status of every sensor in the advanced interface.
Clicking button “Basic” will return to the basic interface.

Note: Advanced interface will consume more system resources. It is recommended to use basic interface for common use.



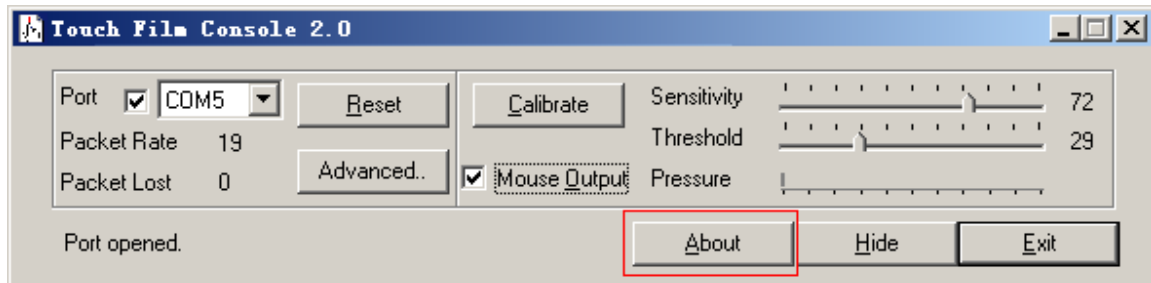
9.4 Reset

1. The button “Reset” will reset the touch film driver after pressed. Also, you can reset the driver by hot keys [Ctrl + Alt + R].

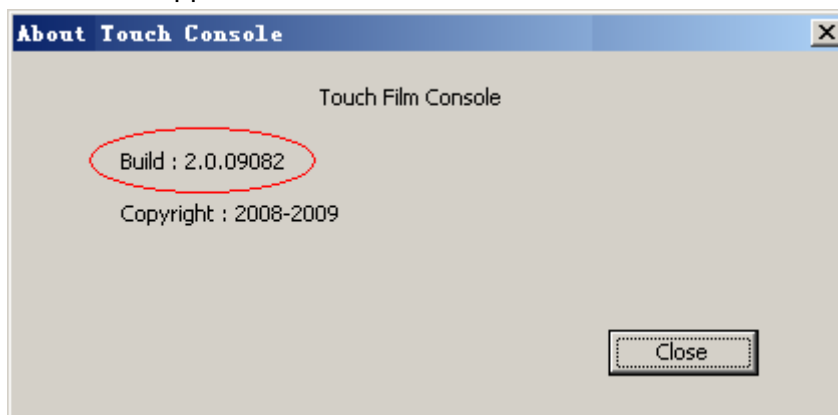


9.5 Version Information

1. Click button "About" to check the version information.



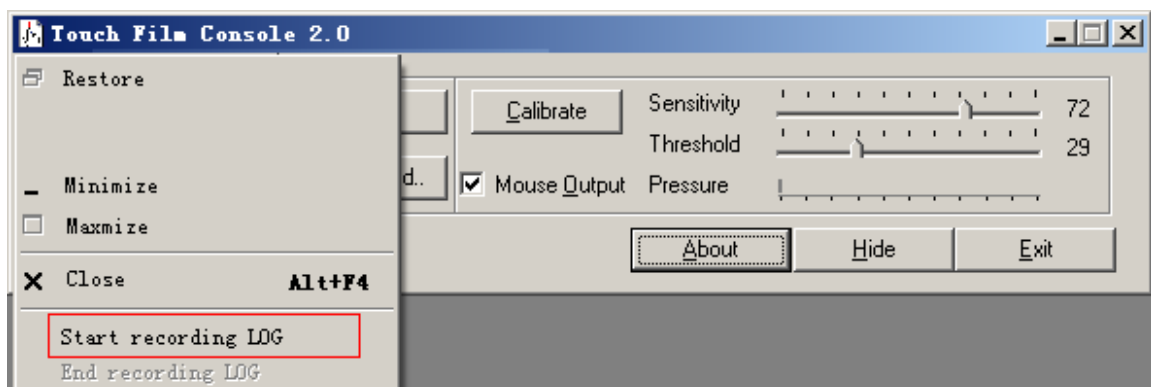
Version information is as below. Please provide the Build number when you seeking help from our Technical Support.



9.6 Recording logs

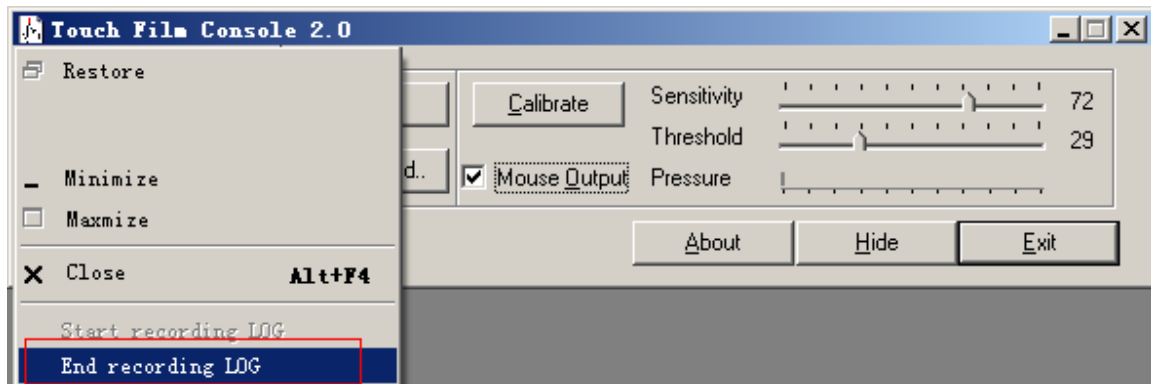
When the problems occur and you cannot solve it yourself, please record logs and sent it back to the our Technical Support for diagnosis. email: tech@ezscreen.com

1. Start recording



Click the icon “G” at the top left corner, then select “Start recording LOG”.

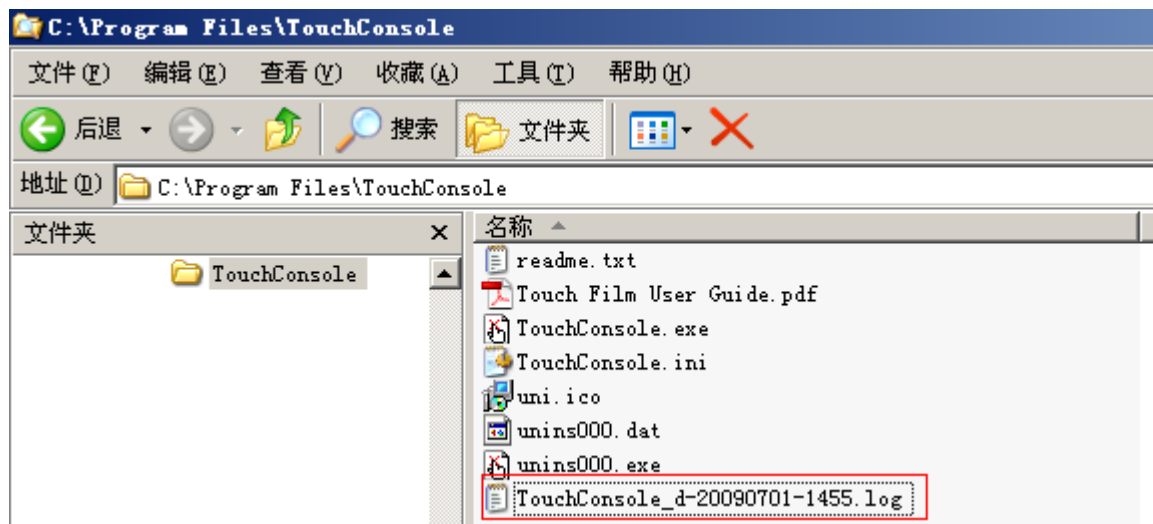
2. End recording



After recording data a few minutes, click the icon “G” icon at the top left corner of driver window, then select “End recording LOG”.

If recording does not be ended manually, the driver will end it in 30 minutes automatically.

The LOG file will be saved under the same folder as installation, by default “C:\Program Files\TouchConsole\”. The file name consists of date, time and postfix “.LOG”.



Please send both LOG file and TouchConsole.ini to our Technical Support.

10 Fault Diagnosing Guide

DRIVER DOES NOT RECOGNIZE THE ThruTouch

Touch film on a different com port than the one selected.
Another device, driver or program is using the port.

FALSE TOUCHES

If the noise on the system is great, then the Pressure indicator may move by small amounts without the presence of a finger. If the Threshold is set too low, then the noise on the system could trigger false touches. This can be remedied by adjusting Sensitivity to a lower level, thus making the system less sensitive.

FAILURE TO SEE TOUCH EFFECT

The default setting for the touch film driver is set that the mouse cursor movement is disabled during setup. The user must enable this output option by following selecting "Mouse Output" check box.